

INCOME QUALIFICATIONS:

All applicants must meet current income qualifications with an annual household income less than the area median incomes listed below:

	60% AMI
1 Person	\$25,620
2 Person	\$29,280
3 Person	\$32,940
4 Person	\$36,600
5 Person	\$39,540

Guidelines Effective March 6, 2015



Federal HOME regulations apply to some units at this property. Please be advised all applicants must meet income restrictions to qualify for tenancy. Wilderness Falls II does not discriminate on the bases of race, color, religion, sex, handicap, familial status, or national origin.



For more information on Fair Housing call (800) 669-9777



RENTAL INFORMATION:



8551 Lexington Ave
Lincoln, Nebraska 68505
Phone: (800) 378-9366 or
(402) 434-3344
Fax: (402) 434-3343

IN PARTNERSHIP WITH:

Midwest Housing Initiatives, Inc
PO Box 5425
Lincoln, NE 68505

Wilderness Falls II



Wilderness Falls II

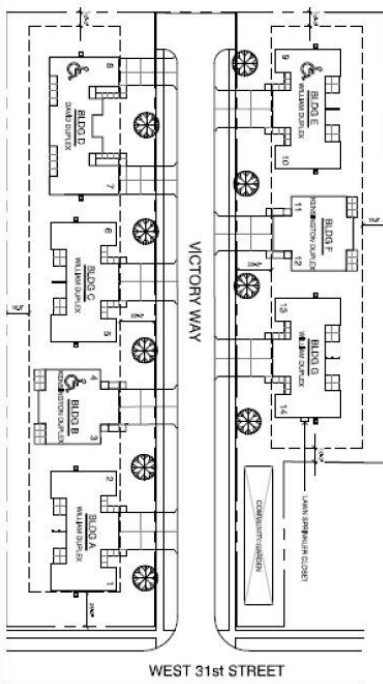
Maintenance Free Living



31ST & VICTORY WAY
FALLS CITY, NEBRASKA

Wilderness Falls Phase II Groundbreaking Wednesday, September 2, 2015 - 11:00 am

SITE PLAN



FEATURES:

- Duplexes
- Zero-entry design with private entrances
- All electric, energy efficient units*
- Owner pays for garbage pick-up
- Grounds maintenance and snow removal services provided
- Fully handicap accessible units

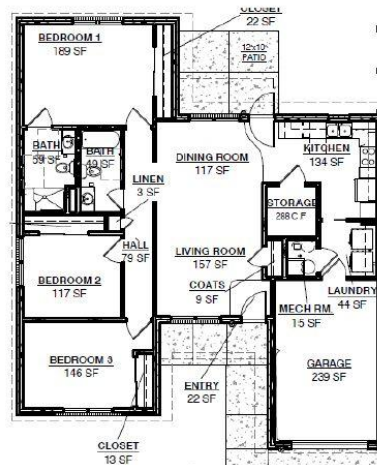
* Meets several Green Built standards

AMENITIES:

- Range/oven, refrigerator, microwave and dishwasher included
- Washer and dryer in every unit
- Large bathroom with walk-in shower
- Attached garage, with electric opener
- Community Garden

3-Bedroom Floor Plan

Monthly Rent \$515
4-Bedroom Monthly Rent \$560
2-Bedroom Monthly Rent \$475
(Based on unit availability)



1375Sq. Ft.