

EDGE Newsletter

2022 | Quarter 2

April, May & June

Lucas Froeschl,
Executive Director

Board of Directors

Executive Board

Rod Rowland, President

Ray Joy, Vice-President

Bart Keller

Steve Kottich

Kevin Malone

Dana Rathje

Directors

Mayor Shawna Bindle

Brian Daake

Mitch Merz

Adam Morris

Chris Halbert

Edward & Sandra Hartman

Tim Heckenlively

Ryan Larsen

Marc Morehead

Joe Rector

Steve Severin

David Sickel

Ex-Officio Director

Anthony Nussbaum

Falls City Feels Electric

LB977 Passes Legislature

Senator Slama's \$15m power infrastructure bill passed through the Legislature with zero nay votes. EDGE is awaiting OPPD's guidance on how they wish to proceed with an application and Falls City Board of Public Works partnership. [Link: Senator Slama's Legislative Update](#)



EDGE testifies in favor of LB977 to Appropriations Committee on Feb. 16th

[Read the Testimony Here](#) 

City Council Approves 33rd Street

EDGE hires Engineer for 19-Acre Master Plan



Scheduled to break ground this Summer, 33rd Street will connect Community Medical Center and our new commercial development to Hwy 73

EDGE, in partnership with the Community Redevelopment Authority (CRA), has hired Snyder and Associates to prepare a master plan for the North Hwy 73 development. The engineers will estimate utility installation costs, provide a grading plan, visual concept with proposed layout, and marketability opinions for business recruitment.

Committees

Investor & Community Relations

Denise Daake

Bart Keller

Marc Morehead

Sarah Morris

Carla Rhodd

Joleen Stoller

Marketing & Sales

Brian Daake

Jerry Duerfeldt

Don Ferguson

Steve Kottich

Kevin Malone

Mitch Merz

Steve Severin

Product Development & Public Policy

John Caverzagie

Chris Halbert

Tim Heckenlively

Ray Joy

Ryan Larsen

Charles Radatz

Dana Rathje

Beth Sickel

Merle Veigel

Contact Us

Falls City Economic Development
and Growth Enterprise, Inc.

1705 Stone Street

Falls City, NE 68355

Office: (402) 245-2105

Cell: (402) 245-8435

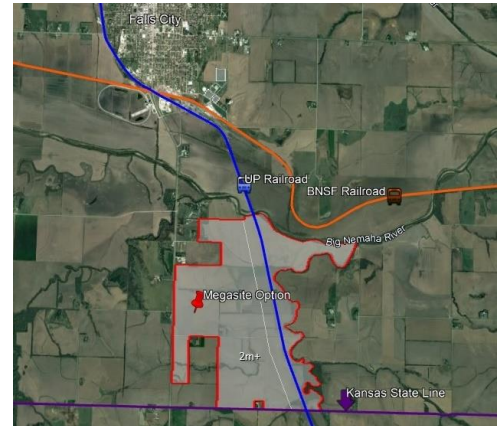
Director@FallsCityEDGE.com

www.FallsCityEDGE.com

EDGE Partners with OPPD

Olsson Hired for 1,000+ Acre Megasite Master Plan

EDGE, in partnership with OPPD, hired Olsson to prepare a master plan for comprehensive site diligence with utility installation and infrastructure costing. The engineering firm's opinion, with visual concepts and marketing material, is expected to be complete by January 2023.

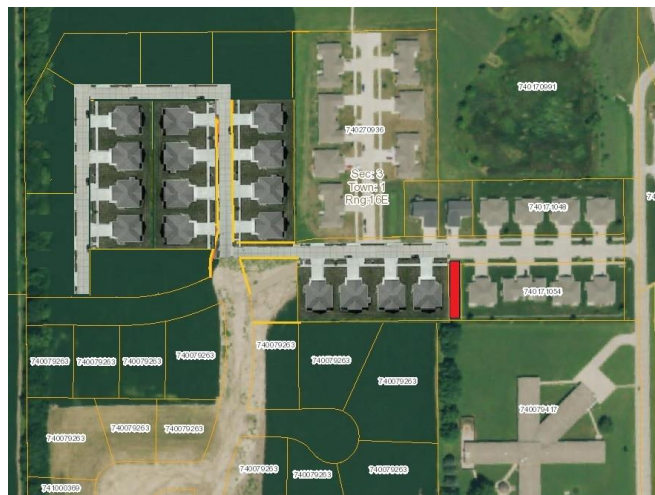


Land option agreements along the Union Pacific rail line south of town could be site of future development

Interested in Building a House?

Low Maintenance Zero-Entry Homes Discussed

A development for those interested in low maintenance homes and yards with smaller footprints has been proposed. The discussed location is Champions Crossing just south of the hospital. In partnership with a developer, EDGE is recruiting 8 local investors to build 2 or 3-bedroom homes around 1,250 sq. ft. Current projected cost is \$200/sq. ft. for slab-on-grade and \$220/sq. ft. with a basement. Multiple layout options available at EDGE. Construction is proposed for Spring of 2023.



Email Director@FallsCityEDGE.com for house program information.