

FALLS CITY NEBRASKA

PASSIONATE • PROVEN • PROSPEROUS



2020

EDGE

ANNUAL REPORT



STRATEGIC PLANNING: OUR 2025 VISION

- A strong robust economy.
- A collaborative focus to approaching opportunities and challenges.
- Abundant, reliable and sustainable energy independence.
- Plentiful, accessible and flexible housing.
- Quality, skilled and diverse workforce.



CHAMPIONS CROSSING

EDGE advanced the public-private partnership at Champions Crossing with infrastructure construction this summer. This investment is already realizing dividends with the sale of 2 housing sites and we look forward to construction of these homes in 2021.



SOUTHEAST COMMUNITY COLLEGE

Falls City EDGE provided a sizable donation to the Southeast Community College Learning Center in Falls City to support the Gas Metal Arc Welding program. “The Welding program has been determined to be a tremendous asset to the community,” said Beckie Cromer, Executive Director of EDGE. The donations provided the finances needed to ensure the lab had state-of-the-art equipment for students. “We absolutely would not have the beautiful lab and be able to provide the content without the generous financial support from EDGE.” Holly Carr, Learning Center Coordinator. “The economic development group has believed in the impact the welding program will have on the Falls City community for years to come.”

One inaugural welding student stated, “I’m grateful for this opportunity to experience the welding program. I hope to get a better job and make a better life for myself and my daughter.”

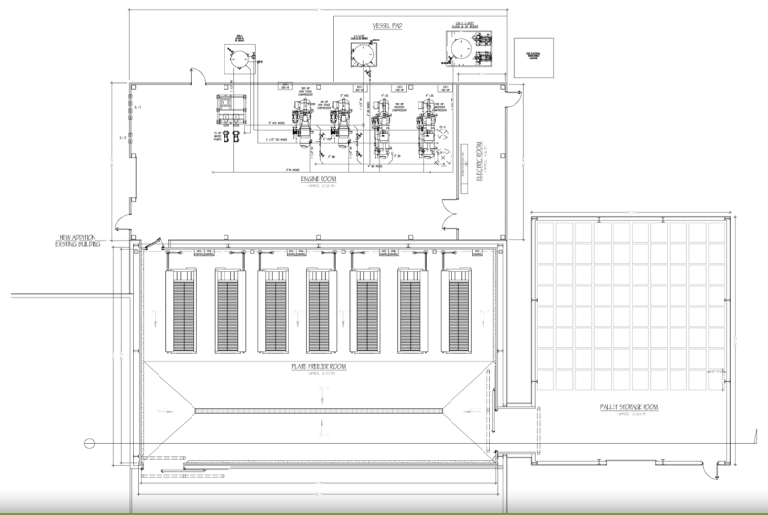


FRONT COVER

Lieutenant Governor Mike Foley toured southeast Nebraska manufacturers early in 2020 which included stops at AirLanco and Vantec, Inc. in Falls City. We appreciate the valuable partnerships we have with our elected officials who work hard to make Nebraska a leader in economic development efforts. **#fallscityproud**

FALLS CITY FOODS

A \$4 million dollar capital investment and job creation project was planned, designed and financed in 2020 with groundbreaking and construction set to begin in Q1 2021. This equipment and building expansion will increase productivity and shorten lead times for their product. It will also include the creation of 10 new employment opportunities at the Falls City facility.



FALLS CITY HOUSING NEED ASSESSMENT

A housing study with community partner engagement and multiple public input components is in its final stages as Falls City diagrams its future housing initiatives and goals. This working document will serve as a roadmap for housing programs and developments in our community.

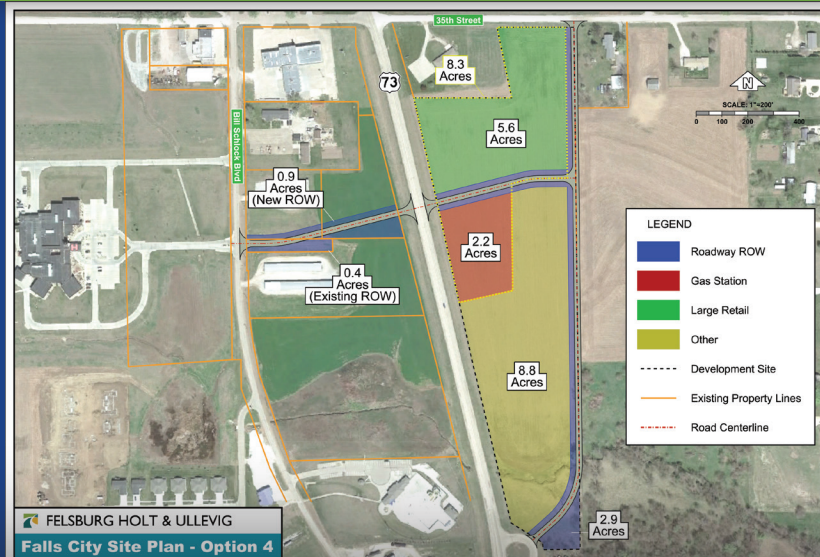


Falls City Housing Needs Assessment 2020 Planning for the Future



SEE.THE.BIG.PICTURE

Falls City EDGE invested in commercially zoned highway property to secure the development future of our community for this generation and the next – The North Commercial Corridor. A site plan was created, a traffic study was conducted and the 33rd St. roadway design has been submitted for consideration to the Nebraska Department of Transportation. This is a massive undertaking and significant investment for our organization and we applaud the visionary nature of the EDGE Board of Directors as they work to create a viable, strong future for Falls City.



“ Alone, we can do so little;
TOGETHER,
we can do
SO MUCH. ”

~ HELEN KELLER



TOWLE WALL OF FAME

The Towle Family was ceremoniously inducted into the Falls City EDGE Wall of Fame in 2020. The Towle family's 4 generations of pioneering business savvy and entrepreneurial spirit has provided the strong foundation anchoring Falls City into the community we know and love today.



LEGISLATIVE DAY

Nebraska Economic Developers Association aligned their goals and priorities in 2020 to secure the necessary legislative support for a newly designed incentive program, the ImagiNE Nebraska Act (LB 1107). Our targeted presence and visionary reputation in the state's capitol helped advance this bill to pass during the 2020 legislative session.



FALLS CITY MERCANTILE

Falls City Mercantile is a wholesale grocer in our community and has been operated by generations of the Simon family. Falls City EDGE assisted in the funding process for this development and it is another successful Tax Increment Financing project.



FALLS CITY MIDDLE SCHOOL MAKER SPACE INVESTMENT

Falls City Middle School and EDGE combined professional and financial resources to install a fully funded modern Maker Space Lab at the middle school. EDGE contributed \$25,000 to this project because we continually look for ways to address challenges by leveraging assets that will best secure Falls City's future, our students!

Falls City Economic Development & Growth Enterprise, Inc. (EDGE)

1705 Stone Street Falls City, NE 68355 | Phone: 402.245.2105 Fax: 402.245.2106 | info@fallscityedge.com