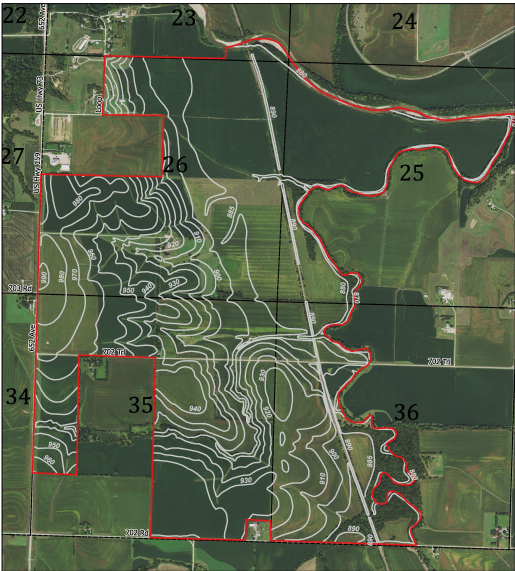
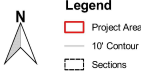


Falls City, NE: 1,000 Acres
70326 652 Avenue | Falls City, NE | Richardson County
Available Acres: 1,017 | Lease Terms: None | Sale Price: 869



Project Elevation Map

Location: Pts. Secs. 23, 25, 26, 35, & 36, T1N, R16E; Richardson County, Nebraska
Scale: 1:9000
Date: December 30, 2017
Imagery Source: National Agriculture Imagery Program (NAIP), 2014.
Elevation Data: Nebraska Department of Natural Resources



Zoning:	None
Topography:	Flat
Adjacent Available Acres:	0
Setting:	Agricultural Land
Within City Limits:	No
Dimensions:	8,000 x 7,000
Specialty Features:	None
Lease Terms:	None
Last Updated:	May 13, 2019

Economic Development Contact

Beckie Cromer
Falls City Economic Development and Growth Enterprises, Inc.
1705 Stone Street
Falls City, Nebraska 68354
(402) 245-2105 | director@fallscityedge.com

Property and Area Description

Boundless industrial and distribution possibilities for this 1,000-acre site offering Union Pacific Railroad rail service and 90-minute access to Kansas City, MO, Topeka, KS, Lincoln, NE and Omaha, NE. Choose Falls City Nebraska’s super site, located in southeast Nebraska, and watch your company grow and prosper!

Population



Source: ESRI®, 2020

Households



Source: ESRI®, 2020

Transportation

Nearest Highway: U.S. Highway 73 (0.1 mi.)
Nearest Interstate: Interstate 29 (25.00 mi.)
Nearest Airport: Falls City Municipal (Brenner Field) (1.00 mi.)
Nearest Commercial Airport: Kansas City International Airport (90.00 mi.)
Distance to Mass Transit: 90
Rail Served: Union Pacific Railroad
Rail Type: Greenfield
Rail Accessible: Yes
Rail Infrastructure in Place: No
Rail Contact: Todd Hackel
Rail Contact Phone: 816-399-1666
Rail Contact Email: thackel@up.com

Utilities

Electric: Falls City Utilities/Omaha Public Power District
Natural Gas: Southern Star Central Gas
Water: Rural Water District #2
Sewer: Rural Water Dist. #2
Telecommunications: Southeast Nebraska Communications